



European Canoe Sprint Junior & U23
Montemor-o-Velho

Welcome to a new
reality starting in 2012...



//Portugal 2012

//European Canoe Sprint Junior & U23

President of the Portuguese Canoe Federation



President of the Portuguese Canoe Federation, Mário Santos



FEDERAÇÃO PORTUGUESA DE
CANOAGEM

We wish to welcome you to Portugal!
Finally , after decades of persistence , Portugal lived up to its odd conditions for canoeing and the lovers of our modality can already count on a course endowed of the necessary conditions and infrastructure to welcome international events .

The European under-23 and junior are the world premiere of canoeing in this course, that in 2013 will receive European Canoe Sprint Senior Championships, and in World Championships Junior & U23 2015.

The beautiful and hospitable town Montemor-o-Velho, 130km from Porto, 230km from Lisbon and only 25km from Coimbra, is the chosen place!
The city of students Coimbra or the holiday Figueira da Foz are the two cities able to write most of the delegations that we are happy to receive .

It is in Montemor - o - Velho under the gaze of the ancient castle that the Portuguese National team has evolved in the last few years and that formations from all over the world come to prepare for major competitions.

We are blessed with sun almost all year around , a mouth watering gastronomy , hospitality like no other and a tremendous desire to show everything that makes Portugal a country loved and appreciated in the world .

Although small and far from having financial and human resources desired the Portuguese Canoe Federation will do its best to make your experience in our country is unforgettable and that you will be left with a wish of returning .
We count on you! Count on us!
See you soon

Kind regards

Mario Santos



Mayor of Montemor-o-Velho

Mayor of Montemor-o-Velho

Montemor-o-Velho’s Town Hall is an enthusiastic partner with the Portuguese Canoe Federation in the application to the Portugal 2012 European Canoe Sprint Junior & U23.

It’s a great honour and an enormous privilege for Montemor-o-Velho to host these prestigious championships.

Montemor-o-Velho’s National Training Centre has now the best conditions to athletes, enthusiasts and canoe supporters.

We are confident that Montemor-o-Velho is the ideal place to host these Champonships and make it memorable for all.

Sincerely,

Luis Manuel Barbosa Marques Leal
Mayor of Montemor-o-Velho

//About Portugal

PROVISIONAL DATES: 12/15 July 2012	PORTUGAL I.D. OFFICIAL NAME Portuguese Republic GPS: 39 30 N, 8 00 W FOUNDING OF THE PORTUGUESE 1143 FOUNDING OF THE REPUBLIC 1910 POLITICAL SYSTEM Democracy NATIONAL SYMBOLS National Flag and National Hymn LANGUAGE Portuguese TERRITORIAL ORGANIZATION Two Autonomous regions (Azores and Madeira). 18 districts CAPITAL Lisbon AREA 92,142km 2 POPULATION 10,642,836 (July 2007 est.) ACTIVE POPULATION 5,523,000 (2004 est.) CURRENCY Euro, divides into 100 centimes G ROSS DOMESTIC PRODUCT 155.131 millions Eur (2006) GDP PER CAPITA 14.654 Eur (2006) GDP - composition by sector: agriculture: 7.9% industry: 25.9% services: 66.2% (2007 est.)
EVENT TITLE Portugal 2012 European Canoe Sprint Junior & U23 Montemor-o-Velho	
THE COUNTRY Portugal	
THE CITY Montemor-o-Velho	

LOCATION. Portugal is located on the west side of the Iberian Peninsula, ideally positioned between Spain and the Atlantic ocean. Portugal's excellent geographical position makes it a stopover point for many foreign airlines at airports all over the country. Portugal has 5 international airports: Lisbon, Oporto, Faro, Funchal (Madeira) and Ponta Delgada (Azores). With beautiful beaches, vineyards, sophisticated cities, country inns and palaces, Portugal invokes a romantic notion of breathtaking scenery, rich history and cobble-stone roads. With such a long sea coast, Portugal has a long term tradition with the water and with water sports, such as Canoeing.

LANGUAGE. One of the Latin languages, Portuguese is the third most spoken European language in the world and the native tongue of about 200 million people. The Portuguese-speaking countries are scattered all over the world. Portuguese is spoken in Europe (Portugal), in Africa (Angola, Cape Verde, Guinea-Bissau, Mozambique and São Tomé e Príncipe), in South America (Brazil) and in Asia, (East Timor, the youngest nation in the world). In Portugal, a considerable number of citizens can communicate in English, French and Spanish.

CLIMATE. Portugal has a sunny climate. There are only slight fluctuations in temperature between summer and winter; the overall mean ranges from 25°C in summer to about 14°C in winter. The rainy season begins in November and usually lasts through January. Portugal has 220 days of sun and 3000 hours of sunshine every year!



//Airports

AIRPORTS

GETTING HERE by AIR. Portugal has two major Internationals Airports:

Oporto The OFFICIAL AIRPORT: The Francisco Sá Carneiro Airport is located in the heart of the industrial north of the country, 11km from the city of Oporto, making it a privileged access point to this valuable commercial area. Connection to city centre and interface with Railway Stations by METRO, AEROBUS.



GPS: N 41° 14' 19" ,W 8° 40' 14", N 41 14.328 W 8 40.234

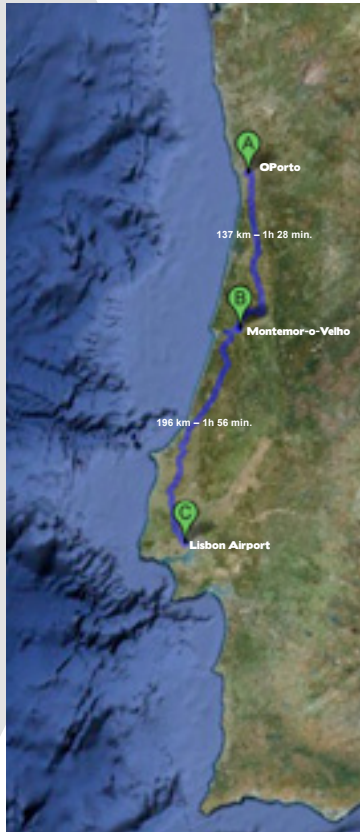
LISBON AIRPORT: The Lisbon Airport, providing service to the capital of Portugal, is the busiest and most important airport in the country. The principal point of entry for travellers arriving in Portugal. Connection to city centre and interface with Railway Stations by AEROSHUTTLE and BUS.



GPS: N 38° 46' 12" ,W 9° 07' 41". N 38 46.200 W 9 07.688

The train also connects both cities to the airport.

Between both cities there's also a good buses network. Anyway, the organization will provide transport from Oporto airport and Hotels and to the race course. Transport from Lisbon airport will be possible but with a extra fee, according to the number of team members.



AMSTERDAM	ATLANTA	BERLIN	FRANKFURT	GENOVA
3:00	6:00	4:00	3:00	2:30
PT . LISBON				
MADRID	MUNICH	PARIS	ROME	LONDON
1:15	3:00	2:20	3:00	2:20

//About the City

The event will take place in Montemor-o-Velho, Portugal.

Montemor-o-Velho (Portuguese pronunciation) is a town and municipality of the Coimbra District, in Portugal. It has roughly 30,000 inhabitants.

Montemor-o-Velho, who was once a land of farmers, is now facing the tertiary sector activities, partly due to the installation of government offices, financial institutions and services; small traders is varied. The industry is represented with several manufacturing plants in small and medium size.

Agriculture continues to have great importance. People grow maize and rice using increasingly modern processes and the existence of a Vocational Agricultural School, together with the Cooperative and the services of the Agricultural Zone DRABL, contribute technical expertise that improves the productivity of the fields.



//Sport Presentation & Services

ABOUT SPECTACTOR EXPERIENCE PLAN

All entrances to the competition will be free of charge. We will provide temporary structures for leisure. This will include entertainment, food and beverage kiosks, merchandise kiosks and other activities for the public to enjoy.

We will try to attract as many people as possible, for that we will use local and national media coverage like radios, TV channels, press and media.

The venue will be as attractive as possible, with big outdoors, layouts and décor.

To take their stay comfortable we will have benches and Shadows so they can assist the start as well as the finish.

ABOUT SPECTACTOR SERVICES

INFORMATION: The information will be set in 3 steps:

- a. Outside the limits of the event at different public locations;
- b. From the sites of parking;
- c. In the main entrance to the venue in appropriated structures for the purpose.

CONFORT & MOBILITY: We will provide benches, shadow areas, and transportation from the start venue to the finish venue (as well as the return).

MERCHANDISING: The merchandising will be set in 2 steps:

- a. Outside the limits of the event at different public locations;
- b. In the main entrance to the venue in appropriated structures for the purpose, along the public access.

SANITARY FACILITIES: Will be temporary structures, placed in strategic locations.

FOOD: This service will be assured by locals cafe & restaurant and food structures rented to catering and drinks establishments. Will be located in areas of contact with the public.

//Competition Information

ABOUT COMPETITION VENUE and SPORT INFRASTRUCTURE

VENUE: The main infrastructures will be at Centro de Alto Rendimento de Montemor-o-Velho [CAR].

Geographic Location:
Lat 40°10'21.13"N / Lon 8°41'4.73"W
Depth from 1.60 mts to 3.00 mts
Electrical power: 220 W (16, 32, et 63 amp)
Travel lift up to 39 ton
Boat yard services
Located at 139 Kms from the Porto airport

//Athletes Area

ATHLETES AREA CHARACTERISTICS:

The athletes will have one area only for them. This will include:

BOATHOUSE

RESTROOMS & WC FACILITIES

LOUNGE AREA

ATHLETES SERVICES:

THE WEEK BEFORE the race we will provide training facilities: boats, transport- if it's necessary- food and security- in land and in the water.

DURING THE RACE all of this will be maintained. We will also provide accommodation, all the meals and medical assistance.

//Center for High Performance Montemor-o-Velho

The Center for High Performance Montemor-o-Velho [CAR], to be installed in bed Father Stephen Cabral, stands out for its importance nationwide. It is an anchor project with the capacity to generate synergies and commitment from both the public and the private sector, applying the strategic value of sport in the local development agenda. Recent investments by the municipality, as the improvement of the hall, the construction of the pool hall, or ongoing projects like the rehabilitation of the bed and Father Stephen Cabral Cycleway Mondego, prove this.



GPS. N 40°10'31.54" W 8°39'15.26"

This project is admittedly an urban project structuring for Montemor and for the region, or in proximity scales, given the impact on the riverfront of the historic center, either by the way territorial expression marks the center of the valley of the Mondego. The Center for High Performance Montemor-o-Velho Nautical hundred part the [CN], anchored on the banks of the valley between Formoselha Montemor and the Athletics Course geared towards the training of Triathlon, and the Youth Hostel, as in the area of transition to the Historical Center. This second pole (Lane / Farm), downstream on the right bank, reinforces the functional profile of the bed Father Stephen Cabral associated with sport and strengthens the link between the infrastructure to support high performance sport and the urban village.

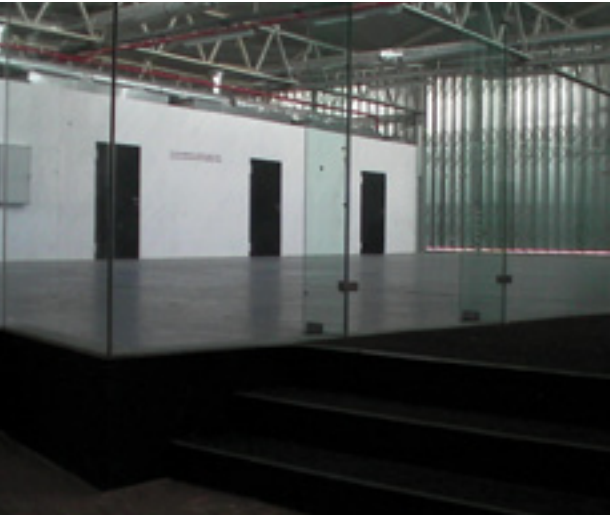
The relationship of sports facilities in urban areas and in the valley will always be supported by cycle paths paths: for the urban network in connection with the Municipal Pool and Pavilion, and the bike path along the axis of the Mondego CAR along the riverbed Father Stephen Cabral.

Water Plan

In amendments to the plan are contained water related to the functional performance of the course - the return channel / channel heating and cooling - and related to the quality of the course, specifically with water quality - the diversion of Vala's Den system of water supply and the amount.

Water quality is directly dependent on the deviation of the Ditch Pit. This trench has the function of drainage from farm fields and flows directly into the course, dragging the field pollutant continuously. This is incompatible with the safe use of that body of water, so the correction is not only necessary but urgent. It is a quality assurance for structural Nautical Centre for rowing and canoeing, but also and especially for open water swimming. The proposed route, based on the joint study of the IDRA INAG and provides for the diversion route in the ditch alongside the course, with the confluence downstream of the dam that controls the level on the course. The upstream water supply relies on the possibility of direct input from the central bed of the Mondego River or from the irrigation ditch in pumping Formoselha, admitting the possibility of a further strengthening of these systems depends on the hydraulic study.

In any case, matching the intervention with the existing structures.



Deployment Of The Building

The building is due to the location of the pier and the outside access. The movement of boats from the parking of trailers to the storage in the hangar, and in that to the access to water is in direct and sequential rectilinear path. This circuit is organized into five stages: parking of trailers, the first phase of assembly; hangar, the second phase of assembly and tuning; ramp to the pier. The design of each of the respective areas is due to the size of the largest boat - shell 8. Thus, in cross-section have the hangar with 24m and modulation of the outdoor areas around 30m and already has the channels of movement and protection. On-ramp to the dock for easy direction changes in access to the pontoons, we have a value of around 35m. The approximately 100m from the front occupied by hangars and other functional areas served by access to the Sailing Centre on the west and east by the waterfront close to the limits of this area, sized to receive any kind of events.

HIGH

ACCESSIBILITY

Accessibility divided into access and entrances. We have access via the connecting bridges and Formoselha of Lavandeira, upstream and downstream respectively, the north side of the course.

This group includes the interventions are still needed for compatibility / reorganization of the circulation system of agriculture. The layout of the course favors the direct relationship of the surrounding urban areas - Montemor / Formoselha / Carapinha - with the Nautical Center. Clarifies the types of travel, agricultural and non - agriculture.

An uneven crossing the bridge crossing Formoselha directs the fields in the direction perpendicular to the road from the field, freeing them for the exclusive use of traffic agriculture, thus helping to reverse the current situation.



GPS. N 40°10'31.54" W 8°39'15.26"

Inputs, and downstream, establish their links being accessed and the Nautical Center. The downstream node in the articulation of the road north to connect to Alfarelos is also the main access to the Nautical Center. This entry corresponds to the route between the node and the square topped by triangular building. The course has a profile with approximately 500 parking spaces and the triangular square has an area reserved for bus parking area immediately in front of the functional dependence of the hangars. The public side of the entry is marked with a metal frame tower whose height will allow the highlight of the sailing center in the valley of the Mondego.

Together with the infrastructure and existing services, will provide:

- Reception Area
- Security bars
- Police
- Outdoors
- Boats structures
- Tents
- Chairs
- Athletes Private Area
- Audience Structures
- Food and Beverages area
- Restrooms and Toilets for audience
- Media & Press Area
- WC, showers and laundry facilities
- Parking



PER

Building

The building consists of a single large ship, modulated based on the module of the hangars, 24x6m, which occupies the entire front available from the ditch bordering the fields to the south and the cooling channel to the north. It ended with a solid sliding gate, which ensures both access to the building and the Nautical Center. Works like door Nautical Centre, enabling direct access from each of the hangars or from the collective areas.



The changing rooms and associated facilities (sauna, Turkish bath or Jacuzzi) are organized in three sections, allowing global usage patterns or in part, based on the value scale for regular use, 90 athletes were divided by gender in 60/30. The two nuclei at the north end, are able to work together to share a sauna, Turkish bath and jacuzzi. Still, the architectural solution safeguards the use is not dependent on gender, to better respond to the type of evidence, but also the possibility of expanding the locker room to the point charges described above - most likely situation in swimming and triathlon than in canoeing and rowing, given the evidence of their own cycle. Access to showers is made from cross paths. The accesses to the west solely to the possibility of expansion, occupying the space or the aisle, using temporary structures, outer space.

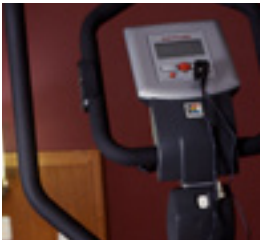


The technical area for the installation of the sauna, Turkish bath, Jacuzzi and allows the installation of this equipment independently of the structure of the resorts, subject to the necessary articulation for direct access to the space associated with the showers.



The hangars occupy the central space, dividing the interior space in three. North is at the top restaurant at the top and south areas of support to athletes and administrative areas, but also the input stage of public events, since this is the side closest to the public areas along the runway.

The restaurant area is the only part of the building that does not allow direct access to the Nautical Center. A gap of about 1m limits the balcony which completes the course, conditions of the possibility of deliberately crossing, valuing the pan and stay on the course to the east and north fields. This system favors an independent management scenario considered the best option for the operation of this equipment. In terms of architectural solution we chose to define the outer limits of the possibilities of releasing organization on the inside for the best response to the level of grant proposals. In the southern areas of support to athletes and administrative areas, are organized in clusters supported by circulations in the longitudinal and transverse. This network service allows for different forms of access management, guiding the direction of flow depending on usage scenarios.



Within the gym focus is the relationship interior / exterior, valuing the transverse direction by replacing the east and west walls in layers of glass sliding panels. This space can also receive other uses in a scenario of large events, with access to the multipurpose room and direct relationship with circulations in the east and west fronts.

PERFORMANCE

//Accommodation

ABOUT ACCOMMODATION:

We have three partnerships with three hotels:

- Best Western Hotel D. Luís.;
- Hotel Tryp Coimbra;
- Vila Galé Coimbra.

Vila Galé Coimbra

Rua Abel Dias Urbano, 20
3000-001 Coimbra
GPS: 40° 12' 55.78" N ; 8° 26' 09.07" W

tel.: (+351) 239 240 000
fax: (+351) 239 240 050
email: coimbra@vilagale.pt



Located right in the centre of Coimbra's historical quarter with a stunning view of the Mondego River, the Vila Galé Coimbra Hotel is geared to cater for both the business and the leisure travel segments.

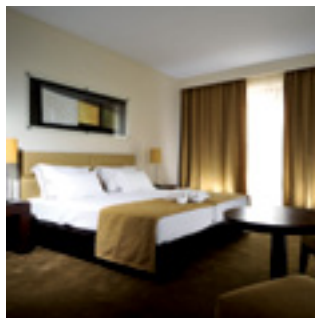
Boasting 229 rooms including 18 junior suites, the Hotel's decor was designed around the theme of dancing, with particular emphasis on its communal areas.

With a wide range of naturally rich entertainment and cultural offerings, a feature this region is renowned for, Coimbra has all the right attributes to be your next holiday destination.

Regarding the business segment, the Hotel not only provides a conference facility that can cater for up to 600 delegates but also offers a full range of event-hosting infrastructure and services.

At Vila Galé Coimbra you can also unwind at our Satsanga Spa or in the outdoor pool. Surprise yourself with the great variety of dishes on offer at the Versátil and Inevitável restaurants and enjoy wonderful late afternoons at the Euphoria Bar.

Decor, lighting, and dancing merge to ensure the well-being of all our guests.



Tryp Coimbra

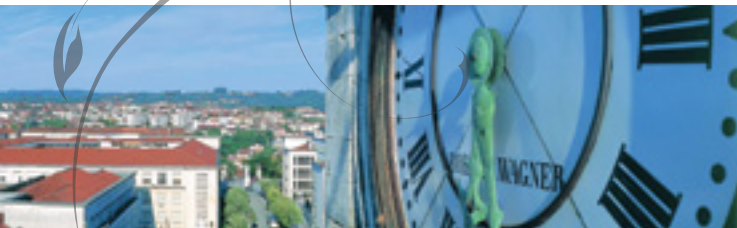
Avenida Armando Gonçalves, Lote 20
3000-059 Coimbra
Tel: (351) 239 480 800
Fax: (351) 239 484 300
tryp.coimbra@solmeliaportugal.com



The hotel is located in one of the hills of the city of Coimbra, only 100 meters away from the University Hospitals and near the business district. It is only 15 minutes away from the prestigious and historic University of Coimbra that dates from 1292, and from the hotel, you have easy access the historic sites of the city.

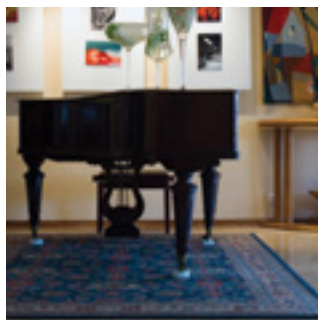
Coimbra itself is only 1 hour away from the international airport of Sá Carneiro in Oporto, and 2 hours away from the international airport of Lisbon. The city is also easily accessible by road and train.





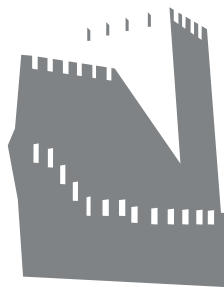
Best Western Hotel D. Luís.

Rotunda Da Ponte Santa. 3040-091
Coimbra Portugal
Tlf. +351 239 802 120 - Fax: +351 239 445 196
Email: comercial@hoteldluis.pt
GPS. N 40° 11' 23.17" W 8° 25' 50.87"



The BEST WESTERN Hotel D.Luis is conveniently situated for both business and leisure travellers, in a quiet area, on a small hill overlooking the Mondego River and Coimbra city, just 2 kilometres from the city centre, within close proximity to highway A1 Lisbon/Oporto and Europa Bridge. You will have the opportunity to enjoy a pleasant meal in the panoramic gourmet Restaurant or just relax with a drink in the friendly atmosphere of the Piano Bar. All the rooms are very comfortable with private WC, satellite TV, radio, music channel, mini-bar, safe, direct telephone and air-conditioning.

The hotel is an ideal base for tourists wishing to explore the nearby interesting cities and taste the regional specialities that this region has to offer. With 100 rooms, some with a terrace and 7 meeting rooms equipped with up to date technology, the BEST WESTERN Hotel D.Luis is well suited for overnight conferences and weddings or private functions requiring accommodation. Attentive staff ensures that your stay is a pleasurable one.



ABOUT ACCOMMODATION:

Is our desire to tell all, without exception, thinking about it we will have several categories of accommodation available, including a category of “Low Cost” to be reckoned with all.

Accommodation For:
Cat 1
Cat 2
Cat 3
Cat 4 Low Cost

//Legal Aspects

ABOUT THE ORGANISING COMMITTEE:

The Portuguese Canoe Federation will be in charge of all the details concerning the sportive organisation.

The responsible for background information, roles and responsibilities will be:

PORTUGUESE CANOE FEDERATION

This candidacy has the support from both city halls: Montemor-o-Velho as well as other local entities.

The Portuguese Canoe Federation as main sport organizer and the IDP (Portuguese Sports Institute) will also support the event.

//Immigration and Custom Procedure

VISA REQUIREMENTS

PORTUGAL is a member-state of the European Union.

The Portuguese embassy in each country will be able to help and provide all the detailed information about Visas requirements.

The OC will provide a PROTOCOL with the National Embassy in order to assure that all the process will be facilitate.

AA Language

OFFICIAL LANGUAGE

The official language of the competition will be English. All the information documents, forms, local identity signs & comments will be able in English and mother language of Host committee, Portuguese.

LANGUAGE & INTERPRETER SERVICES

In order to assure the equal access to information to all the delegation, we will provide a Volunteers with interpreter services for French & English and Russian.

//Security System

SECURITY AT THE VENUE

There will be local policy at both venues to assure that everyone is safe and to guarantee that only authorised athletes go into the athletes area for eg. All the athletes will have a card and must be showed at the venue entrance to prove that they are in the race.

PUBLIC AUTHORITIES

The security plan will be practice by the local security authorities: Portuguese Guard, police, civil protection, fire brigade, Red Cross Portugal.

//Medical Provision

ANTI-DOPING CONTROL

The Doping control will be provide according to the ICF standards, in partnership with the Nationals entities ADOP. At the Venue, it will be located in a specific room, with all the requests.

MEDICAL SUPPORT

The entire medical centre will be located in a specific room, with all the requests, on the START and FINISH VENUES local infrastuctures.

At the venue there will be ambulances and paramedics will follow the race on the water as well. There will be two ambulances available at all times during racing (one during official training).





FEDERAÇÃO PORTUGUESA DE CANOAGEM

Rua António Pinto Machado, 60
4100-068 Porto
Portugal

tel: 351 225 432 237
fax: 351 225 432 238
efax: efax.fpc@net.novis.pt
tm: 351 932 080 303
Skype: fpcanoagem
Email geral@fpcanoagem.pt
Web <http://www.fpcanoagem.pt>

See you next year!!

The Bulletin No. 2 will be released in January 2012 with prices, registration forms, including more information.

We enable training in the Center for High Performance during the winter of 2011/2012 or the performance of pre-stages of the competition.

Requests for quotation for marcos.oliveira@fpcanoagem.pt

NELO

SPORT
ZONE 7